

This flyer has been created for information purposes only and does not constitute a contractual offer for ENERGIE EST Lda. ENERGIE EST Lda. has compiled the contents of this flyer to the best of its knowledge. No express or implied guarantee is given regarding the completeness, accuracy, reliability or fitness for a particular purpose of its content and the products and services it presents. Specifications are subject to change without notice. ENERGIE EST Lda. explicitly rejects any direct or indirect damages, in its broadest sense, resulting from or related to the use and/or interpretation of this flyer. ROVO/2021



PORTUGUESE MANUFACTURING
SINCE 1981

AQUAPURA MONOBLOC 120

DOMESTIC
HOT WATER



A+
ENERGY CLASS

**AEROTHERMAL
HEAT PUMP.**
ERGONOMIC,
EFFICIENT
AND SILENT.



Project co-financed by:



Zona Industrial de Laúndos
Lote 48, 4570-311 Laúndos
Póvoa de Varzim, Portugal
EMAIL energie@energie.pt
SITE www.energie.pt

Follow us on:
ENERGIE PORTUGAL

Authorized dealer

CYLINDER
120L
CAPACITY

EQUIPMENT
NEW
DHW

CYLINDER
INOX
STAINLESS STEEL

WI-FI
OPTIONAL

WALL
APPLICATION

ENERGIE.PT

HEAT PUMPS

FOR DOMESTIC WATER HEATING WITH WALL APPLICATION

ENERGIE.PT

PORTUGUESE MANUFACTURING



CYLINDER
120L
CAPACITY

INSTALLATION
100%
HYDRAULIC

EQUIPMENT

- Portuguese technology and production
- Stainless steel compact heat pump
- Various modes: Eco, Comfort, Overboost and Disinfection
- Hot water up to 60°C in HP mode
- Silent
- Capacity of 120 liters
- Touch controller

- Wi-Fi control (optional)
- Easy to install and setup
- No maintenance
- Wall installation
- Integration in small spaces and areas, 60x60 cm module.
- Built with polymer materials
- Stronger
- ModBus management (optional)

EQUIPMENT
INOX
STAINLESS STEEL

SILENT



WARRANTY
5
YEARS
CYLINDER

See warranty conditions

VARIOUS OPERATION MODES

WIFI CONTROL

- 1 ON/OFF Equipment
- 2 Keyboard Unblock | Access Program | Check
- 3 Select Working Mode | Decrease Values
- 4 Activate Defrosting Cycle | Increase Values

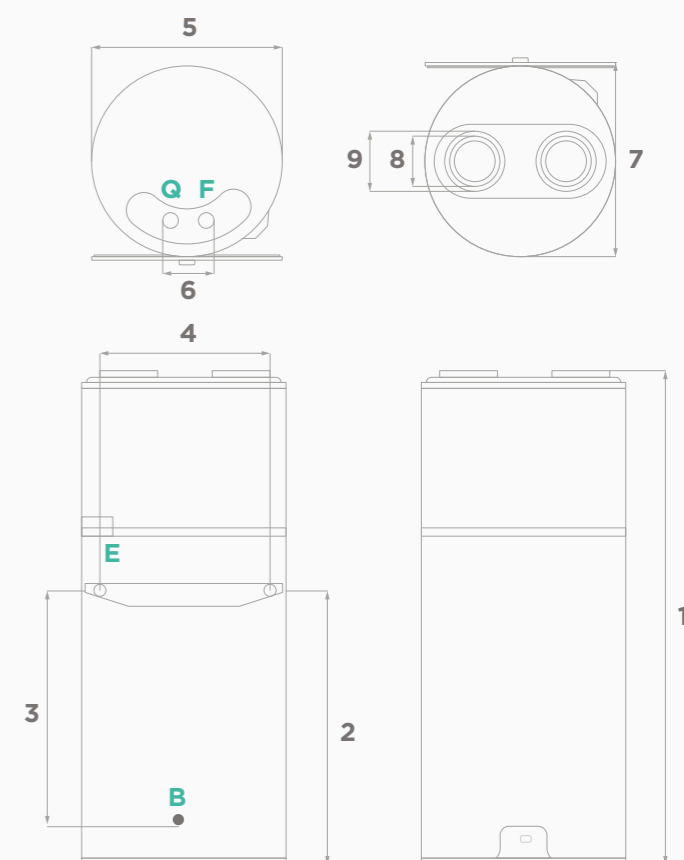


| CYLINDER | | 120 L |
|---|-------|-----------------|
| Nominal capacity | L | 114 |
| Unladen Weight | Kg | 43 |
| Dimensions (Ø/height) | - | Ø530 / 1350 |
| Cylinder material | - | Stainless steel |
| Polyurethane insulation | mm | 50mm |
| Power Supply | - | 230 / 50Hz |
| Thermal Power | W | 1550 |
| Power Consumed HP (average-max) | W | 230 - 350 |
| Electric support power | W | 1500 |
| Refrigerant fluid | -/Kg | R134a / 0,7 |
| Consumption profile | - | M |
| Energy-Efficiency Class (air at 14°C) | - | A+ |
| Energy-efficiency (air at 14°C) | % | 117 |
| Energy-efficiency (air at 20°C) | % | 129 |
| COP (air at 14°C) | - | 2,80 |
| COP (air at 20°C) | - | 3,10 |
| Useful Water Quantity at 40°C | L | 139 |
| Annual electric consumption (air at 14°C) | kWh | 438 |
| Ambient Temperature Limits | °C | -5 / 40 |
| Maximum Pressure | Bar | 7 |
| Max Temperature DHW (HP) | °C | 60 |
| Max Temperature DHW (Support) | °C | 70 |
| Sound Pressure at 2m | dB(A) | 34 |
| Pipe diameters | mm | Ø125 / Ø150 |
| Static Pressure of Fan | Pa | 60 |
| Max. Distance of Pipes ¹ | m | 20 |

¹Considering curves of 90° and grilles on the equipment air inlet and outlet.

Dimensions: **Millimeters**

| | 120 L |
|---|--------|
| 1 | 1350 |
| 2 | 808 |
| 3 | 693 |
| 4 | 450 |
| 5 | Ø530 |
| 6 | 100 |
| 7 | 550 |
| 8 | Ø125 |
| 9 | Ø150 |
| Q | 3/4" M |
| F | 3/4" M |



Q. Hot Water
F. Cold Water
E. Condensate Sewage
B. Lower Buffer